



# AMAZING AUTUMN OFFER

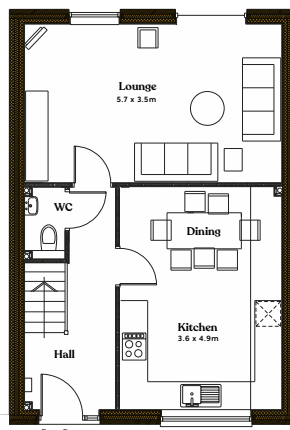
Fabulous 4 bedroom Hazel\* is  
**NOW JUST £319,995!**



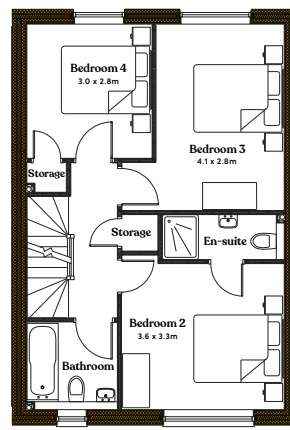
## Impressive specification including:

- Stunning energy efficient new home
- 4 bedrooms, two with quality en-suite
- Open plan kitchen/dining area
- Separate spacious lounge
- Patio doors to turfed rear garden
- A unique heritage mill village location set within extensive parkland

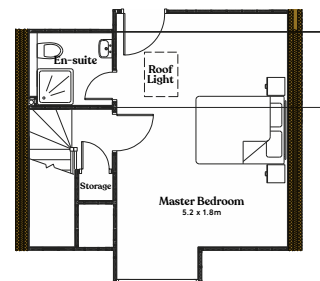
**AND IT'S READY TO MOVE INTO!**



GROUND FLOOR



FIRST FLOOR



SECOND FLOOR

**DON'T DELAY,  
RESERVE TODAY!**



\*Only applies to 29  
Park Meadow Lane